



[PDF version](#) [Forward](#) [Subscribe](#) [Unsubscribe](#)



SNS will fund networking activities for forest researchers and stakeholders

SNS (Nordic Forest Research) is inviting you to a matchmaking day in connection with our two funding calls, [NordForNet](#) and [Research projects](#).

At the matchmaking day you will get some inspiration through talks on the topic, tips on how to apply, workshops and speed talks to elaborate your ideas and to find new contacts and future colleagues.

This is an opportunity to be matched with future cooperation partners!

Markku Rummukainen, climatologist from Lund University, will talk about the forest as a limited resource, and that science cannot provide a definitive answer on how to prioritize, but rather illuminate different alternatives and their respective advantages and disadvantages, synergies, goal conflicts and uncertainties.

[Register for the matchmaking day](#)



Join our forums for a gender balanced digitalised bioeconomy

SNS and NKJ cooperate on the project BioEquality, which arranges a serie of forums aiming to open up for discussions on how the education of young academics can integrate the gender perspective into the meeting between digitalisation and bioeconomy. Read about each of them below.

[More about the project](#)

Discussion forum 1

"Role models for a gender balanced digital bioeconomy"
26th of May, 10.00-11.30 CET

[Agenda and registration](#)

Discussion forum 2

"Networks and mentorship programs to empower young professionals in the digital bioeconomy"
2th of June, 10.00-11.30 CET

[Agenda and registration](#)

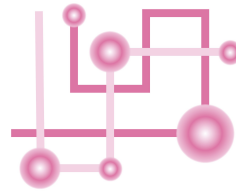
Discussion forum 3

"Tools to incorporate gender perspectives in university courses on digital bioeconomy"
9th of June, 10.00-11.30 CET

[Agenda and registration](#)

Virtual meeting: Data access and security

Join the virtual meeting June 3, 10.00-12.00 CET on data access, reliability and security, arranged by Nordic Testbed Network. We'll meet online and the focus will be to highlight opportunities and best practices, as well as challenges with regard to data management.



[Register](#)

[All details](#)

SHARE TO



Personal data

As a receiver of the SNS newsletter, you are registered in our subscription register with your email address. The addresses are only used for sending newsletters and nobody else have or will have any access to the register. You can at any time choose to end your subscription by clicking on the "Unsubscribe" link at the top right corner of the newsletter.

[Nordic Forest Research SNS](#)