

SNS-EFINORD Network meeting and international workshop

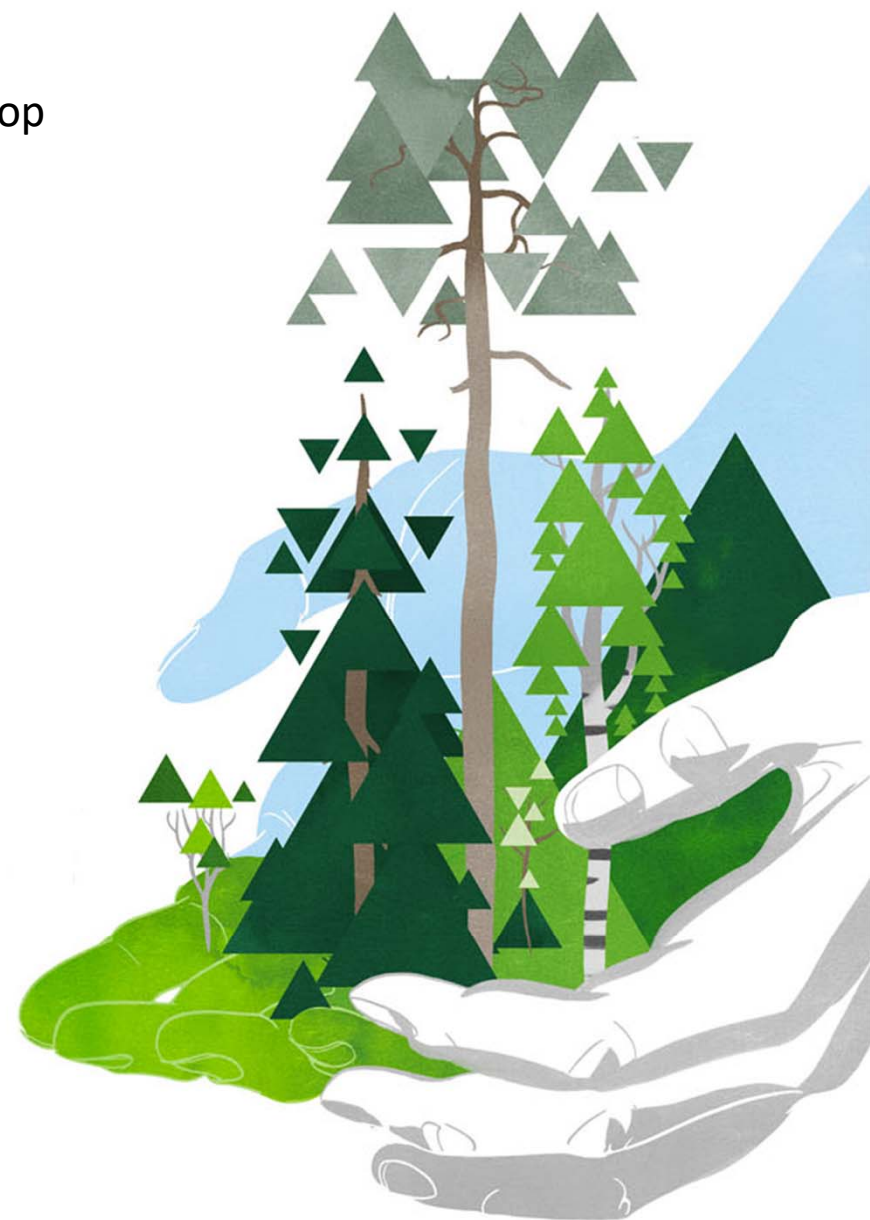
***Tools for improving science-policy interaction
in forestry***

May 15-16, 2018

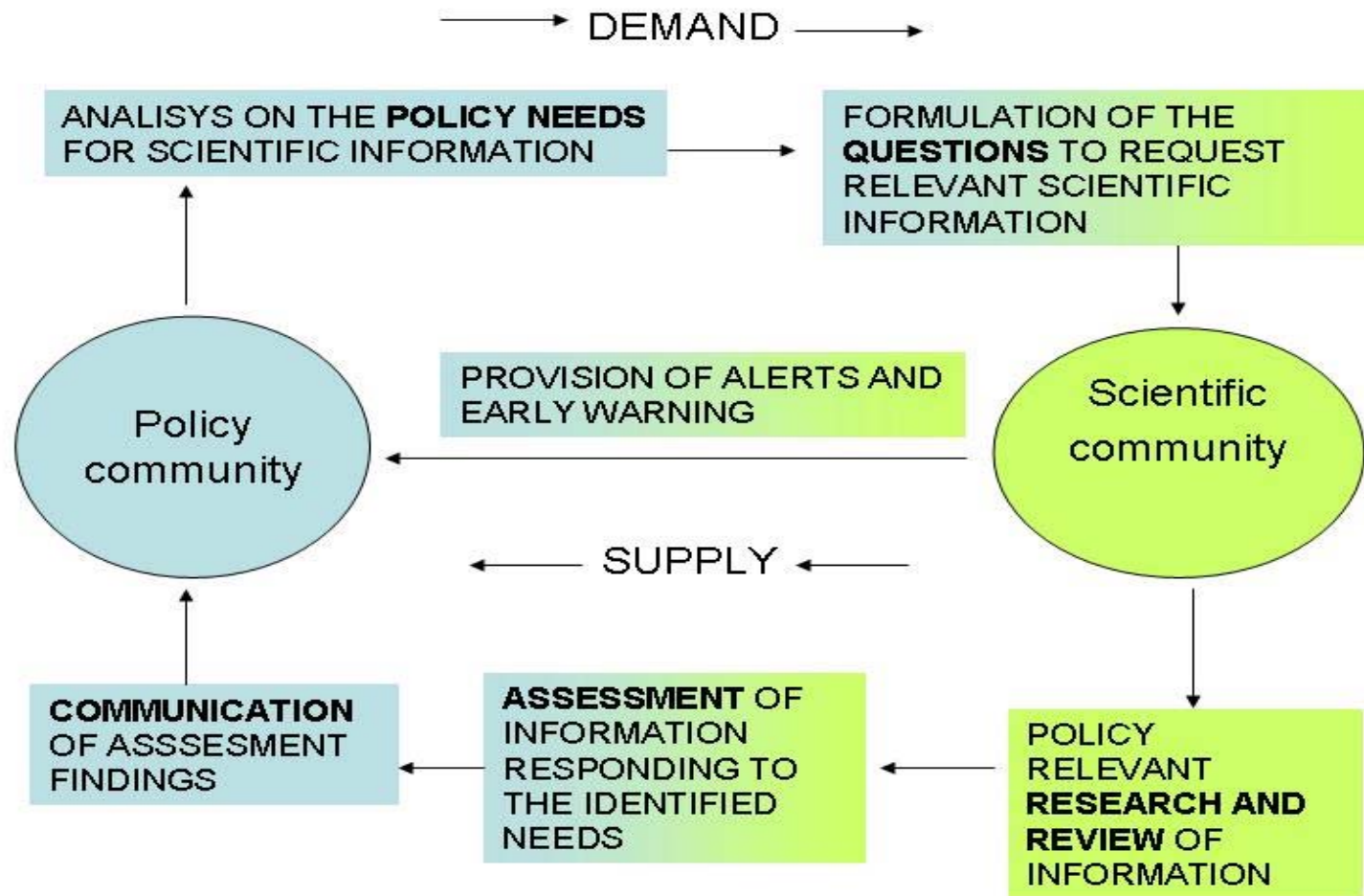
Skogkurs, Biri, Norway

**Examples of international
cooperation on science-policy
interaction**

Risto Päivinen
Tapio Ltd.



Science-policy interface



(IUCN 2010)

The most important attributes of effective science-policy interface

1. **Relevance**, reflecting the ability to link the issues on which decision makers focus.
2. **Credibility**, reflecting the believability of knowledge to a user of scientific results and facts, models, scenarios and options behind them.
3. **Legitimacy**, referring to political acceptability, transparency and trust of the process in the science-policy interface.

(Cash et al. 2003, IUCN 2010)

International examples:

IPBES The Intergovernmental science-policy Platform on Biodiversity and Ecosystem Services

GFEP Global Forest Expert Panel

ThinkForest EFI Policy Support Facility

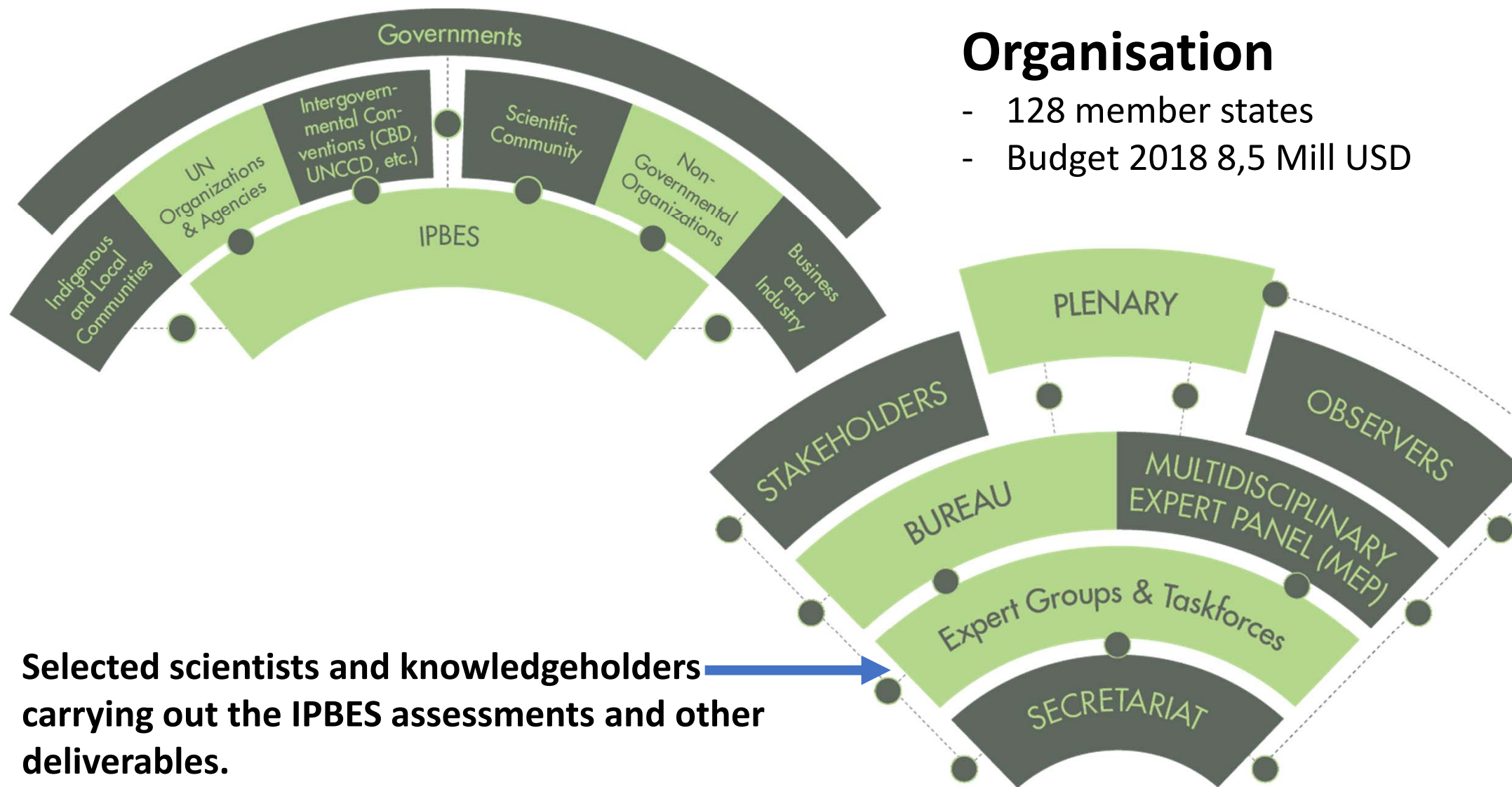
Also others: IPCC, GEO-6, IRP, EPBRS, SEPI etc.

IPBES mission is to strengthen knowledge foundations for better policy through science, for the conservation and sustainable use of biodiversity, long-term human well-being and sustainable development.



To some extent IPBES does for biodiversity what the IPCC does for climate change.





What does IPBES do?

- **Assessments:** On specific themes (e.g. “Pollinators, Pollination and Food Production”); methodological issues (e.g. “Scenarios and Modelling); and at both the regional and global levels
- **Policy Support:** Identifying policy-relevant tools, facilitating their use, and catalyzing their further development.
- **Building Capacity & Knowledge:** Identifying and meeting the priority capacity, knowledge and data needs of our member States, experts and stakeholders.
- **Communications & Outreach:** Ensuring the widest reach and impact of our work.

Europe Central Asia assessment 2015-2018 : State of the biodiversity and ecosystem services

- Biodiversity degrading in the region
 - 15 % of CA population lacks clean drinking water
 - Wetlands -> 50% from 1970 area
 - Nature conservation has improved
 - Etc.
-
- IPBES Nordic to be published in May 2018



GLOBAL FOREST EXPERT PANELS

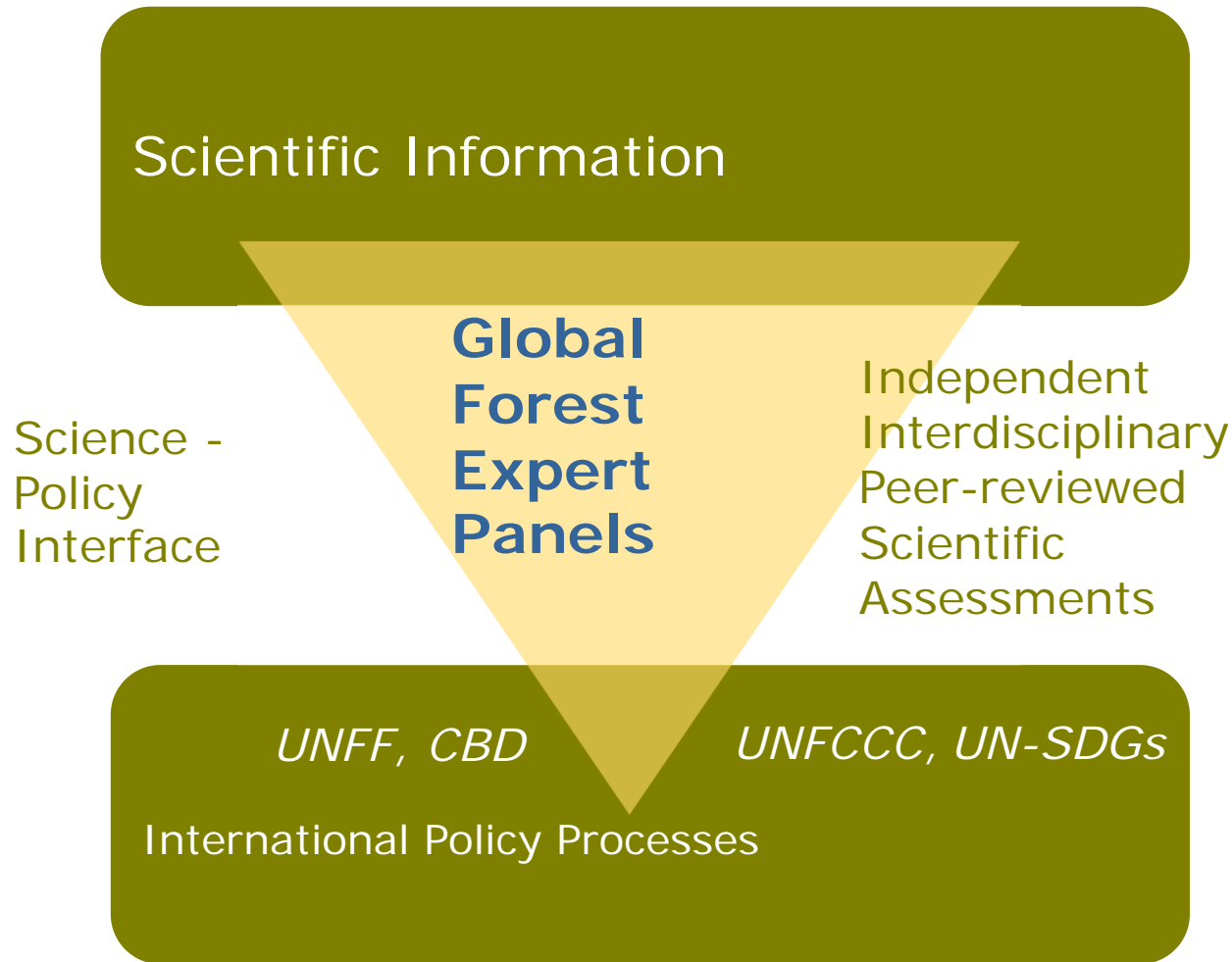
IUFRO-led initiative of the Collaborative Partnership on Forests (CPF) since 2006

Supports forest-related intergovernmental processes by producing assessment reports on emerging global issues of high concern



CPF members:





GFEP assessments - completed



Five scientific assessments so far carried out by independent scientific expert panels

- [Adaptation to Climate Change \(2009\)](#)
- [International Forest Regime \(2011\)](#)
- [Biodiversity, Forest Management and REDD+ \(2012\)](#)
- [Forests and Food Security \(2015\)](#)
- [Illegal Logging and Related Timber Trade \(2016\)](#)

All IUFRO-GFEP publications can be downloaded for free at:

www.iufro.org/science/gfep

GFEP assessments - outcomes

- GFEP Expert Panels have triggered **multi-disciplinary approaches**:
 - Involvement of scientists from various disciplines
 - Increased collaboration with non-forest sectors
- No advocacy research but information basis **for policy options**
- Reports have been launched and study results have been disseminated within the framework of **global policy processes** (*UNFCCC, CBD, UNFF*)
- The publications have received considerable **international media uptake** worldwide (*e.g. by BBC Online, Conversation, Mongabay, Voice of America, UN News Centre, Reuters, Science Daily, Deutsche Welle, and many others*).

GFEP on Forests and Water



Global Forest Expert Panels (GFEP) assessment on Forests and Water (2017-2018)

Goals of the assessment:

- Produce a comprehensive peer-reviewed scientific report and associated policy brief by July 2018
- Provide input to the UN High-Level Political Forum (HLPF 2018) on Sustainable Development, where both SDG 6 ("water") and SDG 15 ("forests") will be under review
- Contribute to the 13th session of the United Nations Forum on Forests (UNFF 13) in May 2018



EUROPEAN FOREST INSTITUTE

EFI MDTF Policy Support Facility

12 March 2018

www.efi.int

Policy Support funded by Multi-Donor Trust Fund

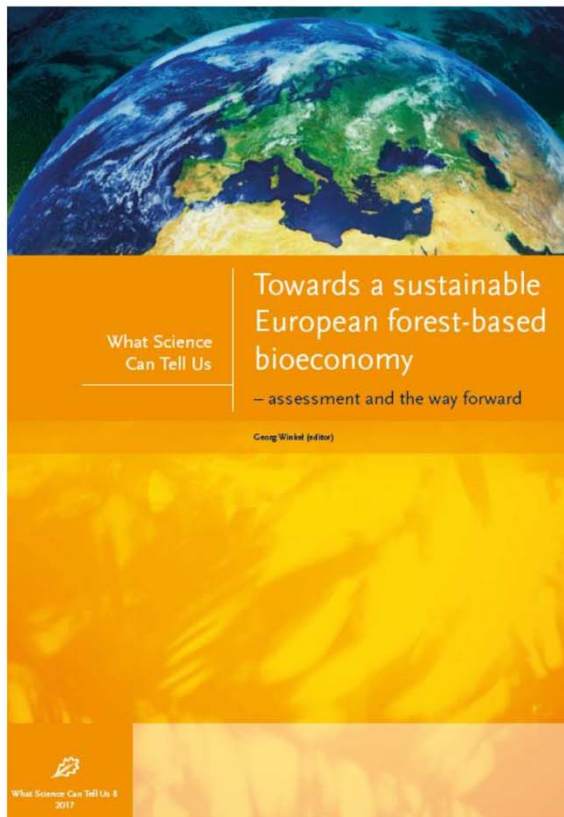
- MDTF first established by EFI Member Countries for 2015-2017
- In 2017, decided to continue another 3 yrs period: 2018-2020
- Currently 10: *Austria, Czech Republic, Finland, France, Germany, Ireland, Italy, Norway, Spain & Sweden* (Poland considering to joining in 2019)
- Funding: 500 000 – 600 000 eur /year



EFI MDTF for Policy Support countries marked by green color

Typical *modus operandi* for Policy Support work

Science-Policy Report + Executive Summary:



ThinkForest science-policy seminar in Brussels and MDTF countries



- Typically 2-4 TF events/year
- Participants: *MEPs, commissioners, ministers, EC civil servants, stakeholders scientists, media,*
- ThinkForest President: Göran Persson

Following principles are followed:

- Studies are neutral, interest group free science-based publications
- Analytical work is carried out by individuals or organizations which have no conflict of interest in the object of study
- It is based on already existing research (collects, coordinates, and synthesizes science work)
- EFI capitalizes on its own and member organizations' research and networks, and also on global scientific knowledge from other organizations and other disciplines

6 proposals for 2018-2019

1. “Bark beetle disturbances: causes, impacts and adaptation strategies”
2. “Europe post 2020 - new perspectives on forest policy and governance”
3. “Improving Pan-European Awareness and Skills Against Forest Fires”
4. “Afforestation and plantation forests: potential and impacts in Europe”
5. “China-Europe Bioeconomy”
6. “Forest and Water



2017: Strengthening the Science-Policy Interface: A gap analysis

- The world is increasingly faced with environmental and societal challenges
- Scientific evidence is not often understood by policy-makers
- The interface needs to be framed to promote better interaction between science and policy
- New ways to approach the science-policy interface required

Goals of this workshop:

- Strengthening the (Northern) European network for exchanging experiences on, and developing instruments for, evidence-based policy making
- Carry out benchmarking on interaction between science and policy in the countries
- Developing applications for further Nordic and European co-operation and projects



Thank you!