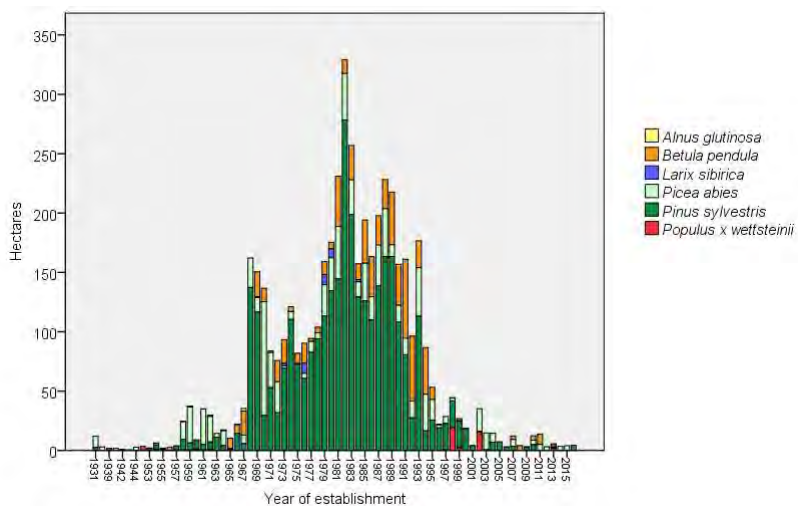


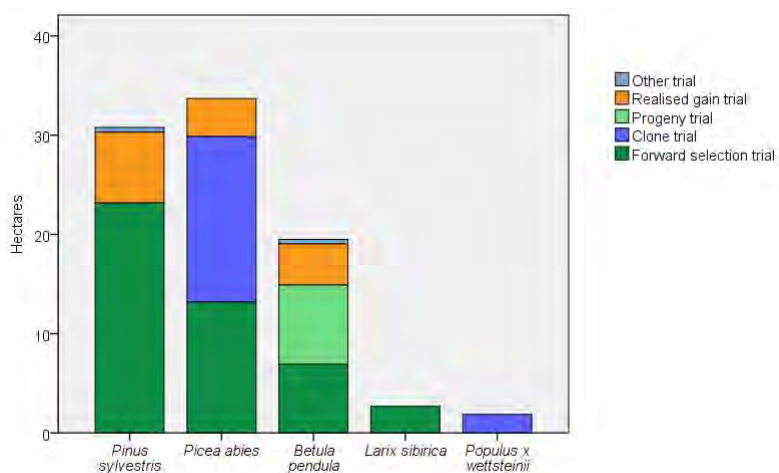
Genetic field testing activities in Finland & prospects of future collaboration



Total effort 4800 hectares of field trials



2004-2017: 78 new breeding trials (90 ha)



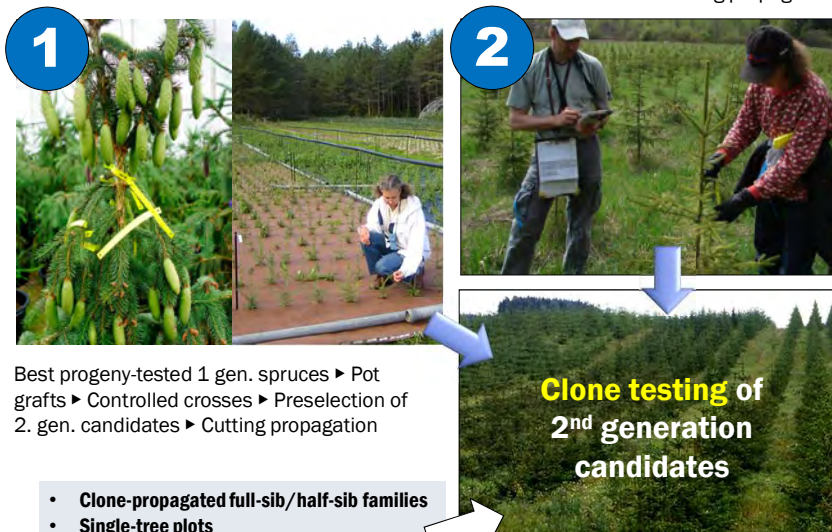
About current testing activities

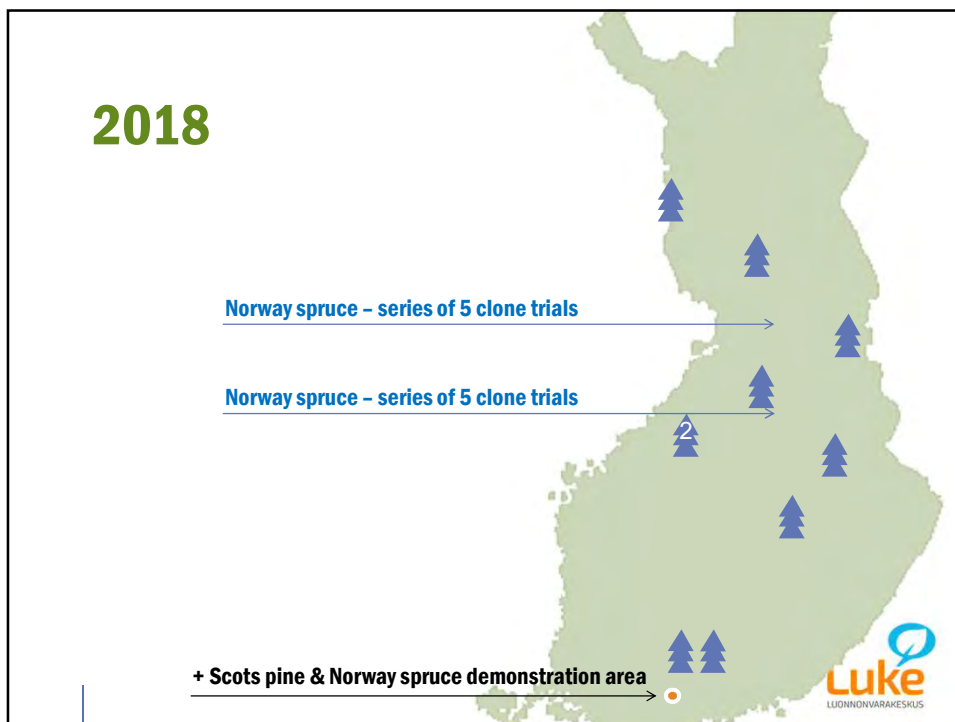
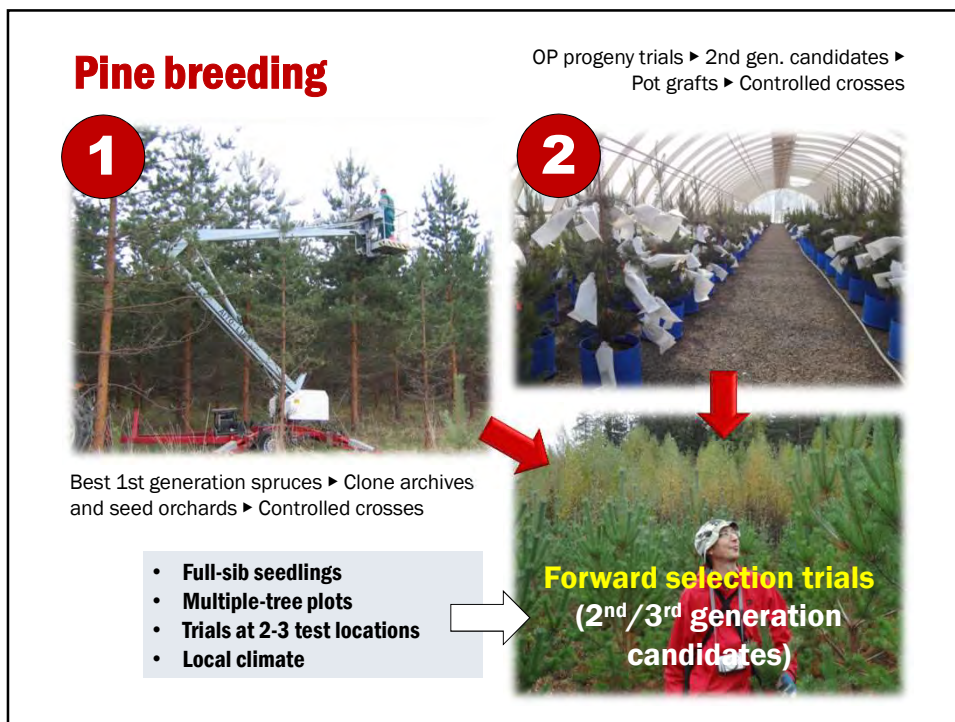
- New breeding trials established by Luke in collaboration with Forest and Park Service
 - Luke: Experimental setup, test materials, supervision of planting, fencing
 - FPS: site preparation, planting, weeding
- Nearly all trials on state-owned land, 1-2 hectares/trial
- Test materials are samples of 2nd-generation recruitment or candidate populations
- Aim is in within-family forward selection

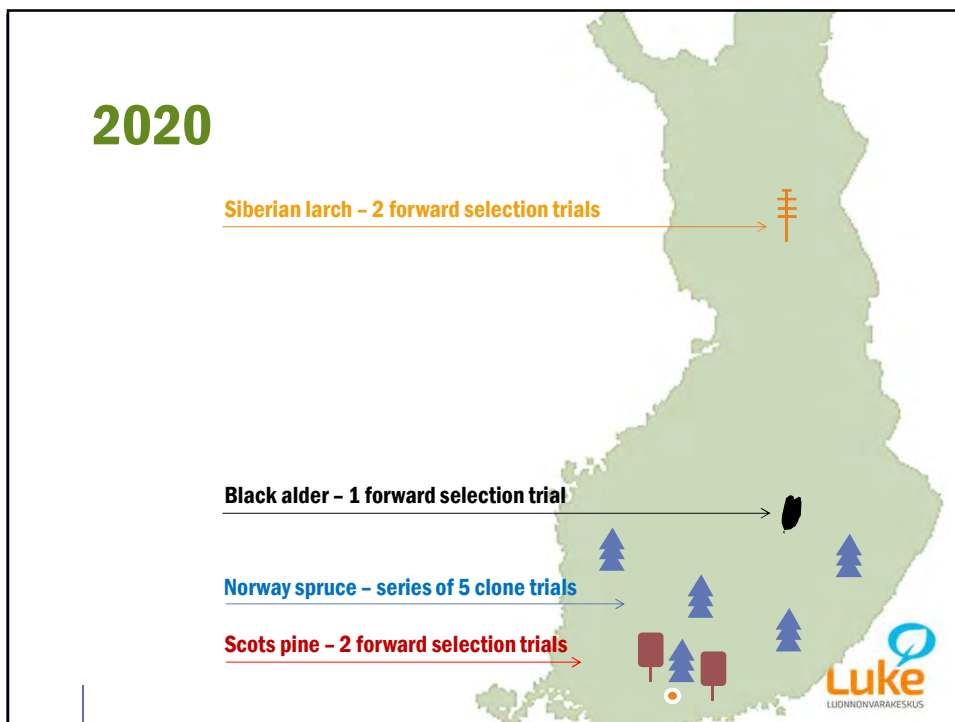
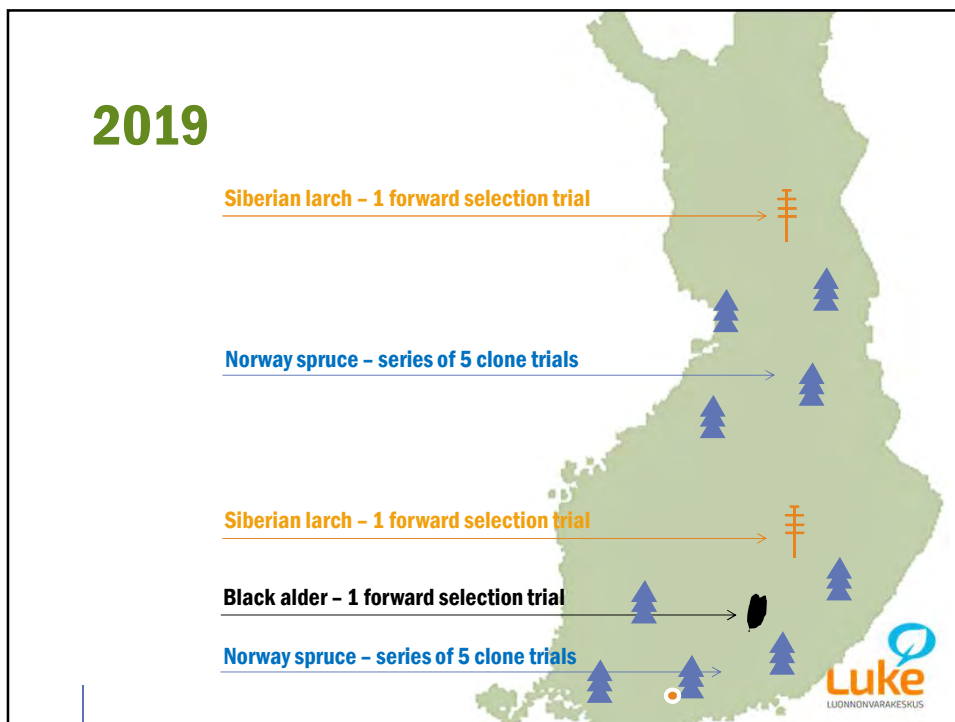


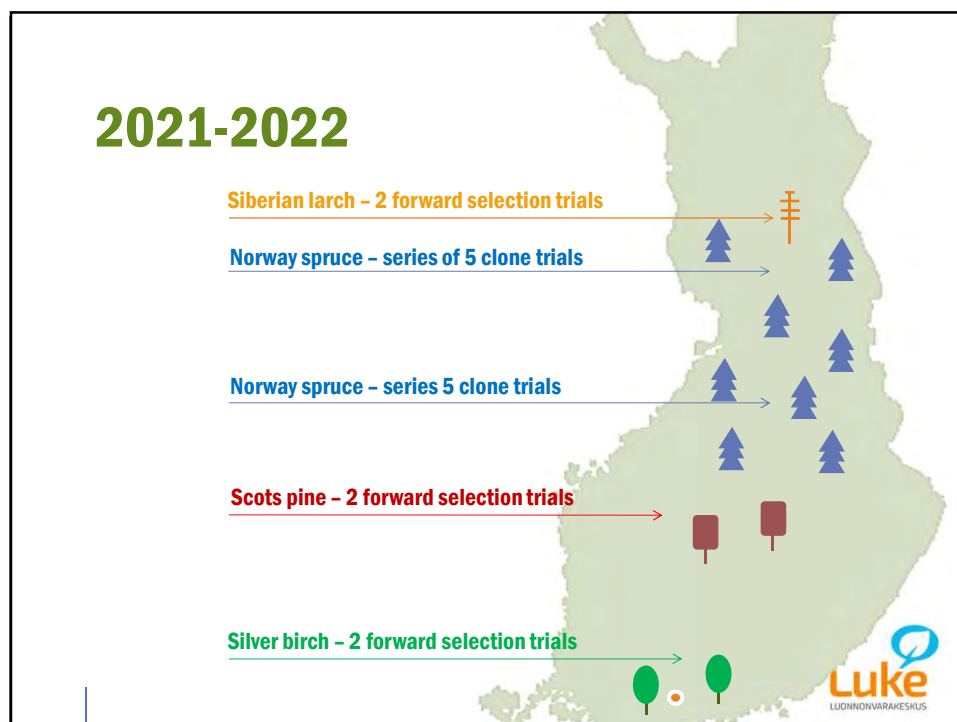
Spruce breeding

Progeny trials ▶ Preselection of 2. gen. candidates ▶
Cutting propagation



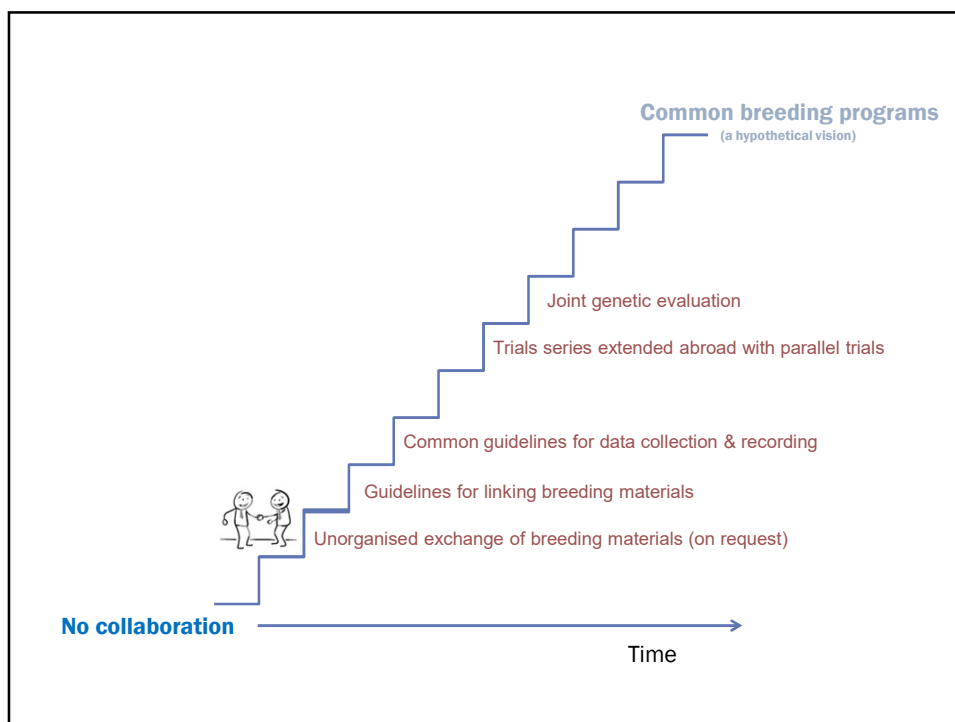






Recent exchanges of test materials

- **Scots pine grafts** from Estonia (Vahur Siimon) & **Scots pine pollen** lots from Sweden (Curt)
 - For controlled crossing in a "climate-change population" comprising 60 Scots pine plus trees from < 60th latitude
- **Scots pine seedlots** from Latvia, Sweden (Aris, Torgny and Finnvid)
 - For three series of realised gain trials
- **Spruce seedlots** to Mats
- **Scots pine seedlots** to Torgny



Some obstacles to collaboration

- Breeding programs are at **different stages**, progress at different speeds
- Synchronising operations (e.g. establishment of common test series across programs) could prove difficult
- Resources differ greatly among countries
- Recent budget cuts of Finnish tree breeding + continuing losses of personnel without replacement
 - hard to keep up with current schedules
 - hard to make firm commitments and future plans
- A flexible approach to collaboration is needed

Collaboration / Trials

- Linking trials across borders with **common test entries**
 - cheap, does not require much extra effort
 - Some **simple guidelines** needed for numbers of common test entries
- **Exchange of seedlots & pollen** offers more flexibility than seedlings & clonal propagules ▶ better control over the timing of trial establishment
- Open-pollinated seedlots > Full-sibs
- Seed orchard seedlots ▶ valuable yardsticks
- Clones might have "copyright" issues?



Collaboration / Data

- Need for some harmonisation in **data collection and recording routines?**
- Data from the linked trials should be on "a common scale"
- A great diversity especially in how quality traits are assessed (even within programmes)



Something to start with

- Generate a **database/list** of breeding materials accessible for sharing between the Nordic & Baltic countries?
 - information on origin, genetic background
 - contact persons
- TREEBREEDEX tried to accomplish this ~10 years ago



Not too much to pick from here today

TREEBREEDEX

Home page > Database

THE TREEBREEDEX PROJECT AND ITS ACHIEVEMENTS

- I. Overview of the project
- II. Description of the consortium
- III. Description of projects activities
- IV. Infrastructure network
- V. Major project events
- VI. Communication
- VII. Useful links

TREE BREEDING AND FOREST TREE GENETICS IN EUROPE

FORUM

INTRANET

DATABASE

© Médias-France 2007 Home page | Site Map | Private area | Credits | Legal notice | French summary 8 guests Last action: 2017-04-18 07:13:34

Something to start with

- A database/list of breeding materials accessible for sharing between the Nordic & Baltic countries?
 - information on origin, genetic background
 - contact persons
- TREBREEDEX tried to accomplish this ~10 years ago
- The actual **use of the materials** should be documented
- A group like this to meet every 3-4 years to check the progress and plan next steps?