

Dendroctonus micans –a friend or foe in spruce seed orchards

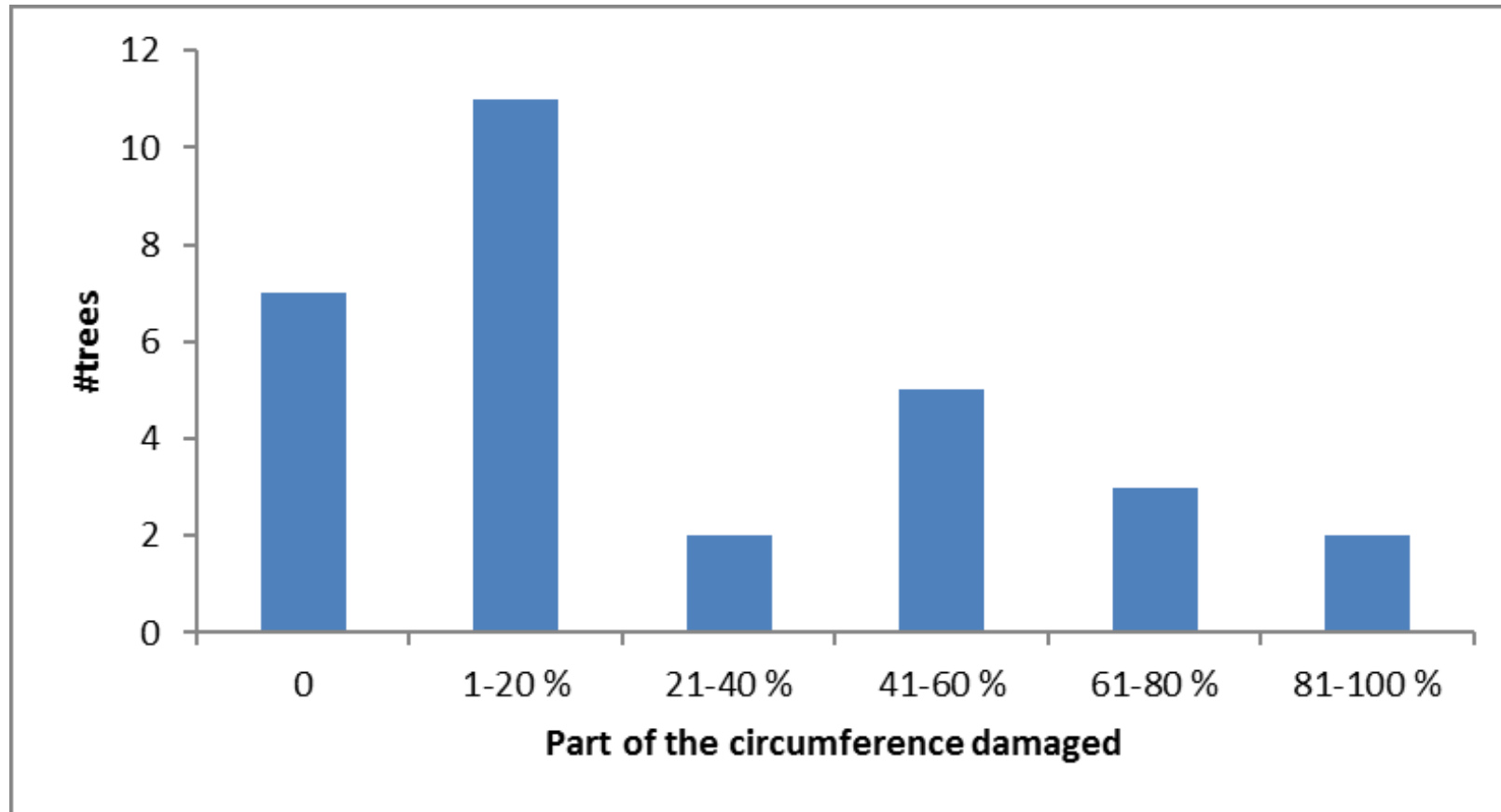
Olle Rosenberg & Jan Weslien

Skogforsk, Science Park, Uppsala, Sweden





Inventory of damage in 2013



A random sample of 30 trees.

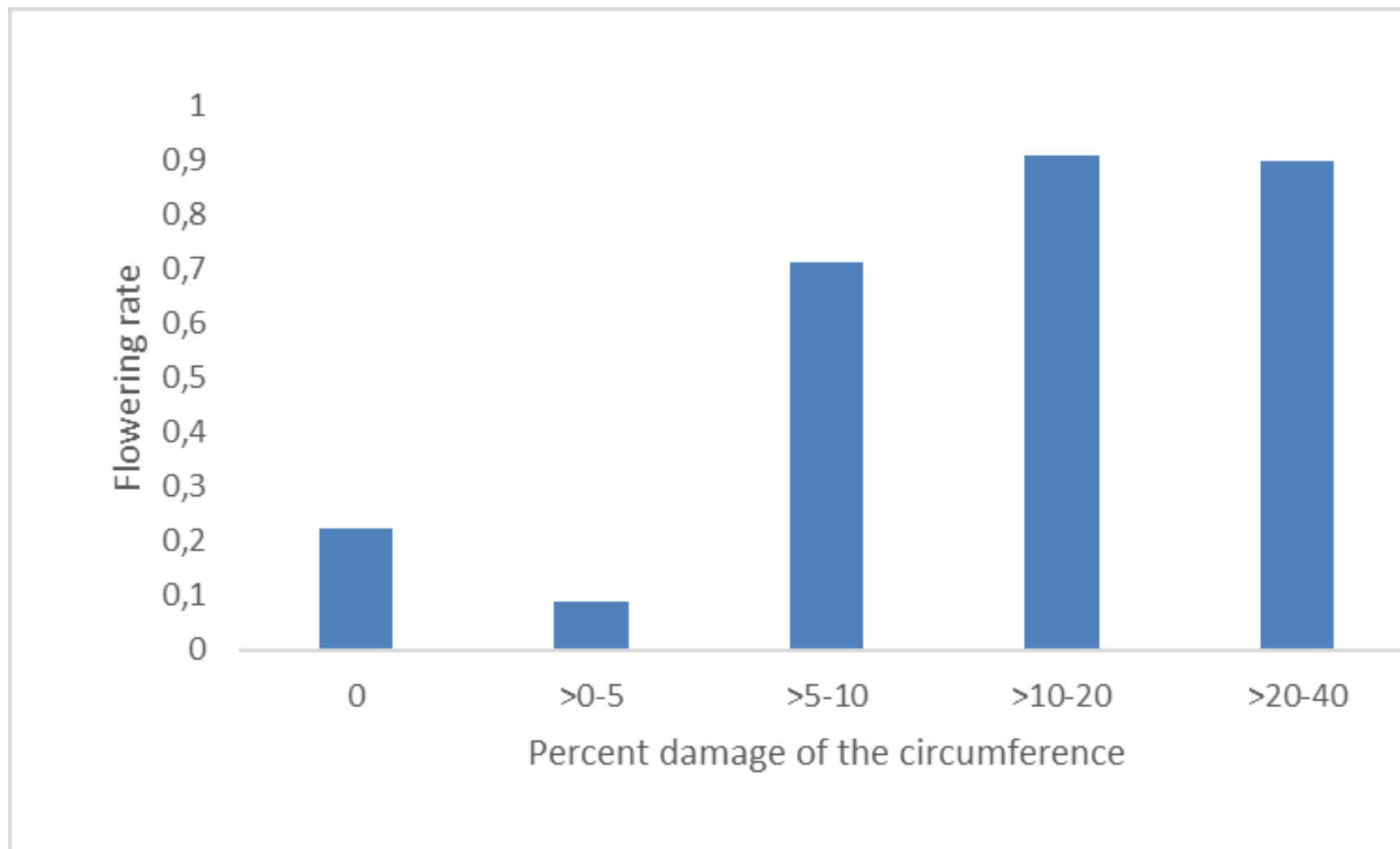
In average 77 % of the trees were infested.

A few trees had damage only on the lower part of the stem

Study in 2016

Flowers	% Infested	#trees
0	52	29
>0-10	33	3
>10-20	100	6
>20-100	83	7
>100	88	15

In average, 70 % of the 60 trees were infested



So, is *D. micans* a friend or foe ?

- It can for sure kill trees
- The result implies that flowering is increasing with infestation
- The study needs to be carried out in several orchards

